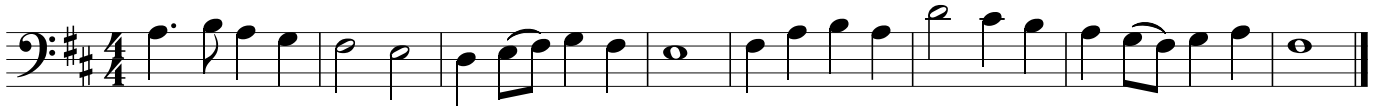


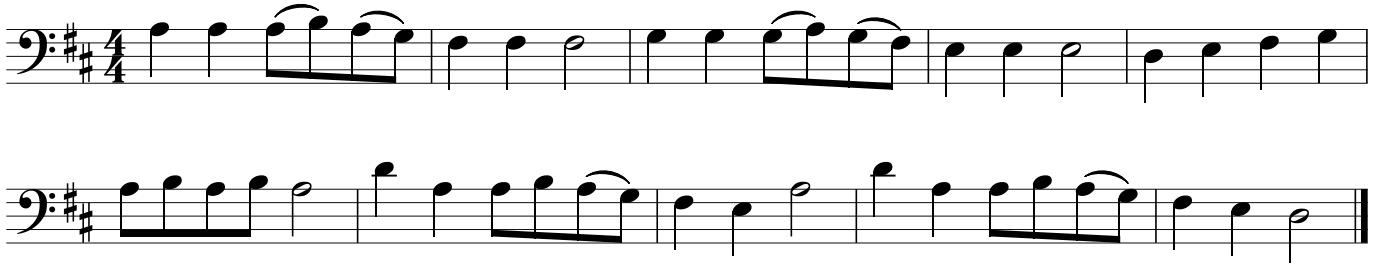
Alle Jahre wieder



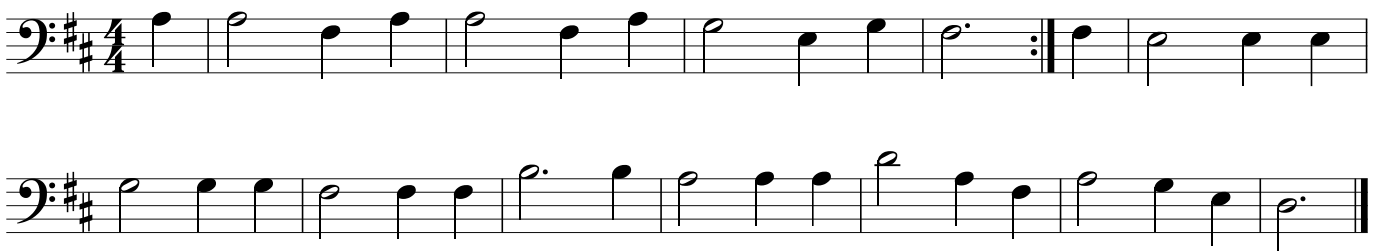
Morgen kommt der Weihnachtsmann



Lasst uns froh und munter sein



Ihr Kinderlein kommet



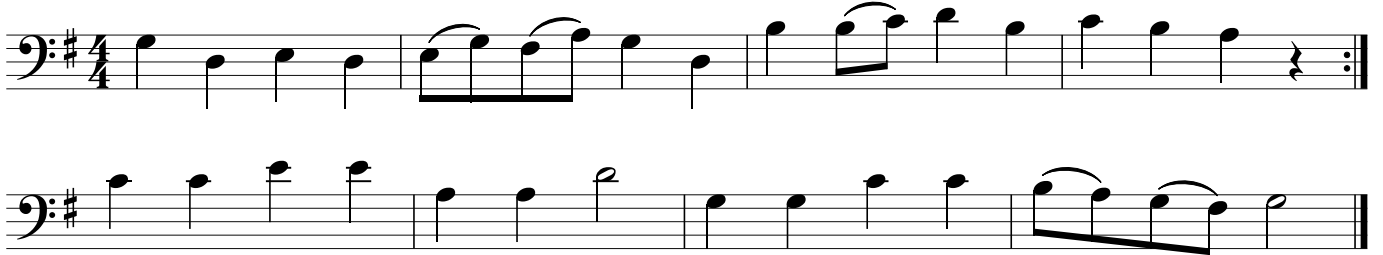
O du fröhliche



Schneeflöckchen, Weißröckchen



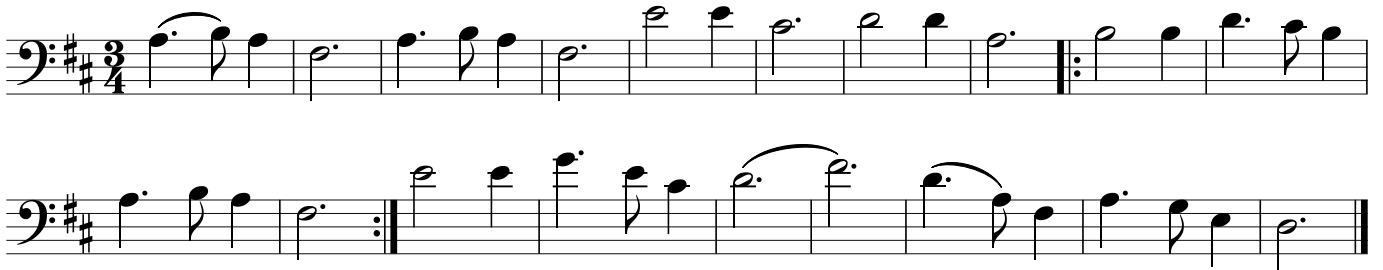
Morgen, Kinder, wird's was geben



Süßer die Glocken nie klingen



Stille Nacht



Stille, stille



Leise rieselt der Schnee

Two staves of musical notation in bass clef, key of B major (one sharp), and 3/4 time. The first staff contains the first six measures, and the second staff contains the remaining six measures. The melody is simple and features several slurs and a final fermata.

Fröhliche Weihnacht

Three staves of musical notation in bass clef, key of B major (one sharp), and 4/4 time. The first two staves contain the main melody with various rhythmic patterns and slurs. The third staff contains a repeat sign with two endings: the first ending leads back to the beginning, and the second ending concludes the piece.

Zu Bethlehem geboren

Two staves of musical notation in bass clef, key of B major (one sharp), and 4/4 time. The melody is characterized by eighth-note patterns and slurs, with a final fermata at the end of the second staff.

Les Anges dans nos Campagnes

Two staves of musical notation in bass clef, key of B major (one sharp), and 4/4 time. The first staff contains the main melody with slurs and a repeat sign. The second staff contains a continuation of the melody with two endings: the first ending leads back to the beginning, and the second ending concludes the piece.

O Tannenbaum

Two staves of musical notation for 'O Tannenbaum'. The first staff is in bass clef, key of B major (two sharps), and 3/4 time. It contains the main melody. The second staff is in bass clef, key of B major, and 4/4 time, providing a harmonic accompaniment. The piece concludes with a double bar line and the word 'Fine'.

Da capo al Fine

Kling Glöckchen

Two staves of musical notation for 'Kling Glöckchen'. The first staff is in bass clef, key of B major (two sharps), and 4/4 time. It contains the main melody. The second staff is in bass clef, key of B major, and 4/4 time, providing a harmonic accompaniment. The piece concludes with a double bar line and the word 'Fine'.

Da capo al Fine

Kommet ihr Hirten

Two staves of musical notation for 'Kommet ihr Hirten'. The first staff is in bass clef, key of B major (two sharps), and 3/4 time. It contains the main melody with slurs. The second staff is in bass clef, key of B major, and 4/4 time, providing a harmonic accompaniment. The piece concludes with a double bar line.

Es ist ein Ros' entsprungen

Two staves of musical notation for 'Es ist ein Ros' entsprungen'. The first staff is in bass clef, key of B major (two sharps), and 4/4 time. It contains the main melody. The second staff is in bass clef, key of B major, and 4/4 time, providing a harmonic accompaniment. The piece concludes with a double bar line and the word 'Fine'.

Da capo al Fine

Vom Himmel hoch

Two staves of musical notation for 'Vom Himmel hoch'. The first staff is in bass clef, key of B major (two sharps), and 4/4 time. It contains the main melody. The second staff is in bass clef, key of B major, and 4/4 time, providing a harmonic accompaniment. The piece concludes with a double bar line.

Go tell it on the Mountain

Musical score for 'Go tell it on the Mountain' in bass clef, key of B major (two sharps), and 4/4 time. The score consists of three staves. The first staff contains the first line of music. The second staff contains the second line, ending with a double bar line and the word 'Fine'. The third staff contains the third line, ending with a double bar line and the instruction 'Da capo al Fine'.

We wish you a merry Christmas

Musical score for 'We wish you a merry Christmas' in bass clef, key of B major (two sharps), and 3/4 time. The score consists of two staves. The first staff contains the first line of music. The second staff contains the second line, starting with a double bar line and the word 'Fine', and ending with a double bar line and the instruction 'Da Capo al Fine'.

Jingle Bells

Musical score for 'Jingle Bells' in bass clef, key of B major (two sharps), and 4/4 time. The score consists of four staves. The first staff contains the first line of music. The second staff contains the second line, including first and second endings, ending with a double bar line and the word 'Fine'. The third staff contains the third line of music. The fourth staff contains the fourth line, including first and second endings, ending with a double bar line and the instruction 'Da capo al Fine'.

Zum Begleiten beachte bitte die Hinweise im Buch. So können beispielsweise einige Lieder gut mit Terzen begleitet werden.