

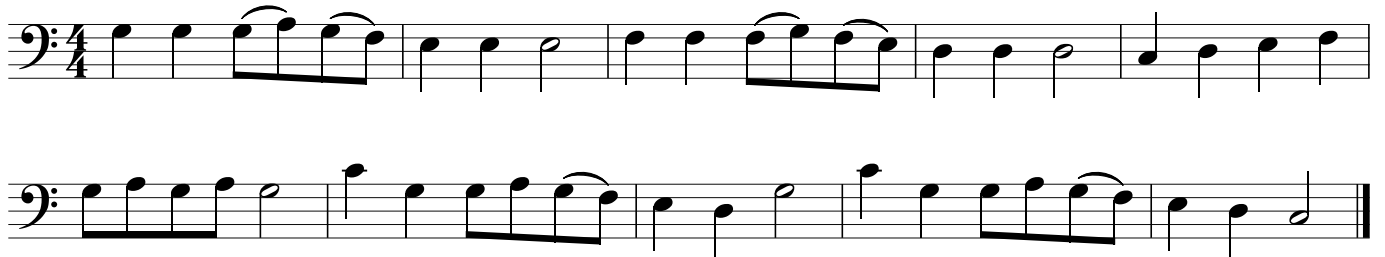
Alle Jahre wieder



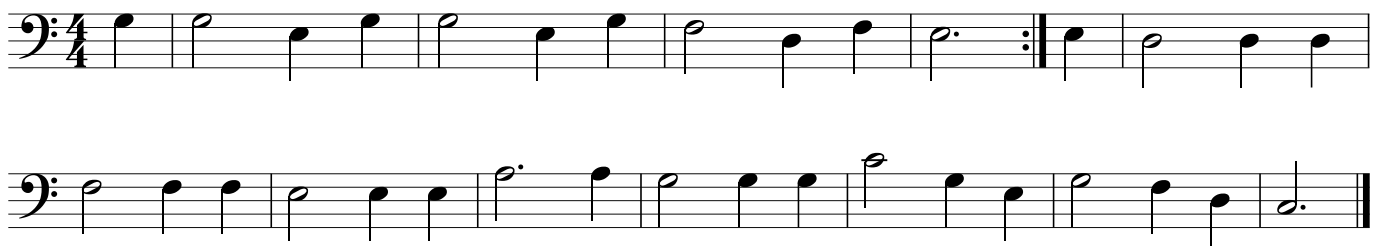
Morgen kommt der Weihnachtsmann



Lasst uns froh und munter sein



Ihr Kinderlein kommet



O du fröhliche



Schneeflöckchen, Weißröckchen



Morgen, Kinder, wird's was geben



Süßer die Glocken nie klingen



Stille Nacht



Stille, stille



Leise rieselt der Schnee

Two staves of musical notation for the piece 'Leise rieselt der Schnee'. The first staff begins with a bass clef, a key signature of one flat (B-flat), and a 3/4 time signature. The melody consists of quarter and eighth notes, with some notes beamed together. The second staff continues the melody, ending with a double bar line.

Fröhliche Weihnacht

Three staves of musical notation for the piece 'Fröhliche Weihnacht'. The first staff begins with a bass clef, a key signature of one flat (B-flat), and a 4/4 time signature. The melody is characterized by eighth-note patterns and some beaming. The second and third staves continue the piece, with the third staff featuring first and second endings marked with '1.' and '2.' above the notes.

Zu Bethlehem geboren

Two staves of musical notation for the piece 'Zu Bethlehem geboren'. The first staff begins with a bass clef, a key signature of one flat (B-flat), and a 4/4 time signature. The melody features eighth-note patterns and rests. The second staff continues the piece, ending with a double bar line.

Les Anges dans nos Campagnes

Two staves of musical notation for the piece 'Les Anges dans nos Campagnes'. The first staff begins with a bass clef, a key signature of one flat (B-flat), and a 4/4 time signature. The melody includes eighth-note patterns and rests, with a repeat sign. The second staff continues the piece, featuring first and second endings marked with '1.' and '2.' above the notes.

O Tannenbaum

Two staves of musical notation for 'O Tannenbaum'. The first staff is in bass clef, key of D major (one sharp), and 3/4 time. The second staff is in bass clef, key of D major, and 4/4 time. The piece concludes with a double bar line and the word 'Fine'.

*Da capo al Fine*

Kling Glöckchen

Two staves of musical notation for 'Kling Glöckchen'. The first staff is in bass clef, key of D major, and 4/4 time. The second staff is in bass clef, key of D major, and 4/4 time. The piece concludes with a double bar line and the word 'Fine'.

*Da capo al Fine*

Kommet ihr Hirten

Two staves of musical notation for 'Kommet ihr Hirten'. The first staff is in bass clef, key of B-flat major (two flats), and 3/4 time. The second staff is in bass clef, key of B-flat major, and 4/4 time. The piece concludes with a double bar line.

Es ist ein Ros' entsprungen

Two staves of musical notation for 'Es ist ein Ros' entsprungen'. The first staff is in bass clef, key of B-flat major, and 4/4 time. The second staff is in bass clef, key of B-flat major, and 4/4 time. The piece concludes with a double bar line and the word 'Fine'.

*Da capo al Fine*

Vom Himmel hoch

Two staves of musical notation for 'Vom Himmel hoch'. The first staff is in bass clef, key of D major, and 4/4 time. The second staff is in bass clef, key of D major, and 4/4 time. The piece concludes with a double bar line.

**Go tell it on the Mountain**

*Fine*

*Da capo al Fine*

**We wish you a merry Christmas**

*Fine*

*Da Capo al Fine*

**Jingle Bells**

*Fine*

*Da capo al Fine*

Zum Begleiten beachte bitte die Hinweise im Buch. So können beispielsweise einige Lieder gut mit Terzen begleitet werden.