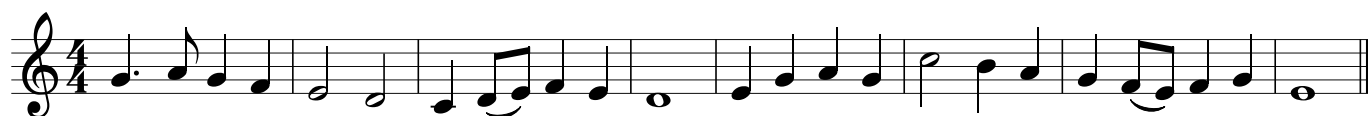


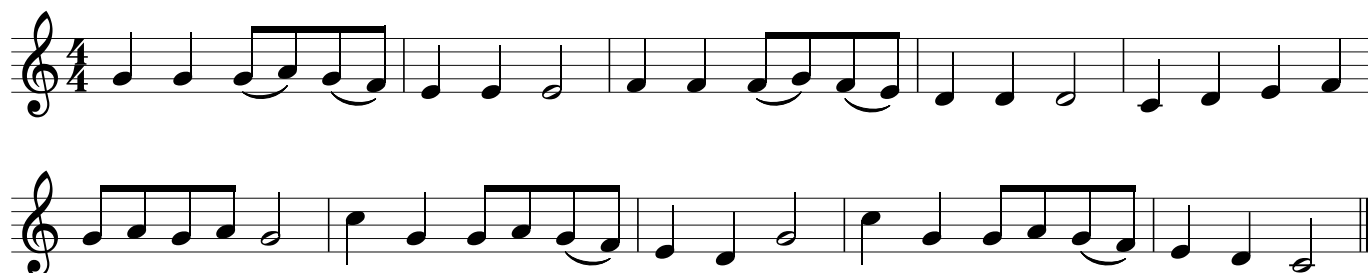
Alle Jahre wieder



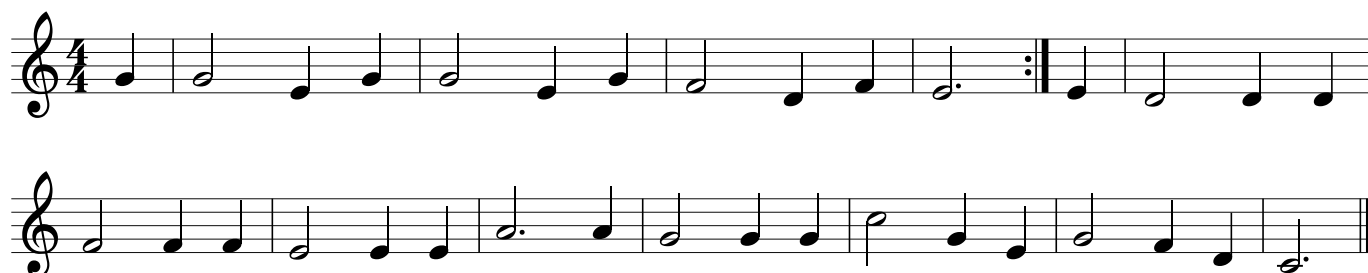
Morgen kommt der Weihnachtsmann



Lasst uns froh und munter sein



Ihr Kinderlein kommet



O du fröhliche



Schneeflöckchen, Weißröckchen



Morgen, Kinder, wird's was geben



Süßer die Glocken nie klingen



Stille Nacht



Stille, stille



Fine

Da capo al Fine

Leise rieselt der Schnee

Two staves of musical notation for the piece 'Leise rieselt der Schnee'. The first staff begins with a treble clef, a key signature of one flat (B-flat), and a 3/4 time signature. The melody consists of quarter and eighth notes, with some notes beamed together. The second staff continues the melody with similar rhythmic patterns and includes a sharp sign (F#) on the second measure.

Fröhliche Weihnacht

Three staves of musical notation for the piece 'Fröhliche Weihnacht'. The first staff starts with a treble clef, a key signature of one flat (B-flat), and a 4/4 time signature. The melody features eighth and sixteenth notes, often beamed in groups. The second staff continues the piece with similar rhythmic complexity. The third staff includes a repeat sign with first and second endings, indicated by '1.' and '2.' above the notes.

Zu Bethlehem geboren

Two staves of musical notation for the piece 'Zu Bethlehem geboren'. The first staff begins with a treble clef, a key signature of one flat (B-flat), and a 4/4 time signature. The melody is composed of quarter and eighth notes. The second staff continues the piece with similar rhythmic patterns and includes rests.

Les Anges dans nos Campagnes

Two staves of musical notation for the piece 'Les Anges dans nos Campagnes'. The first staff starts with a treble clef, a key signature of one flat (B-flat), and a 4/4 time signature. The melody features eighth and sixteenth notes, with some notes beamed together. The second staff continues the piece with similar rhythmic patterns and includes first and second endings, indicated by '1.' and '2.' above the notes.

O Tannenbaum

Musical notation for 'O Tannenbaum' in G major, 3/4 time. The first staff ends with a double bar line and the word 'Fine'. The second staff ends with a double bar line and the instruction 'Da capo al Fine'.

Kling Glöckchen

Musical notation for 'Kling Glöckchen' in G major, 4/4 time. The first staff ends with a double bar line and the word 'Fine'. The second staff ends with a double bar line and the instruction 'Da capo al Fine'.

Kommet ihr Hirten

Musical notation for 'Kommet ihr Hirten' in B-flat major, 3/4 time. The first staff ends with a double bar line and repeat dots. The second staff begins with a repeat sign and ends with a double bar line and repeat dots.

Es ist ein Ros' entsprungen

Musical notation for 'Es ist ein Ros' entsprungen' in B-flat major, 4/4 time. The first staff ends with a double bar line, repeat dots, and the word 'Fine'. The second staff begins with a repeat sign and ends with a double bar line and the instruction 'Da capo al Fine'.

Vom Himmel hoch

Musical notation for 'Vom Himmel hoch' in G major, 4/4 time. The first staff ends with a double bar line. The second staff ends with a double bar line.

Go tell it on the Mountain

Musical score for 'Go tell it on the Mountain' in B-flat major, 4/4 time. The score consists of three staves. The first staff contains the main melody. The second staff begins with a double bar line and the word 'Fine' below it. The third staff continues the melody and ends with a double bar line and the instruction 'Da capo al Fine' below it.

We wish you a merry Christmas

Musical score for 'We wish you a merry Christmas' in D major, 3/4 time. The score consists of two staves. The first staff contains the main melody. The second staff begins with a double bar line and the word 'Fine' below it, and ends with a double bar line and the instruction 'Da Capo al Fine' below it.

Jingle Bells

Musical score for 'Jingle Bells' in B-flat major, 4/4 time. The score consists of four staves. The first staff contains the main melody. The second staff has a first ending bracketed and labeled '1.' and a second ending bracketed and labeled '2.', with the word 'Fine' below the second ending. The third staff begins with a double bar line and repeat sign. The fourth staff has a first ending bracketed and labeled '1.' and a second ending bracketed and labeled '2.', with the instruction 'Da capo al Fine' below the second ending.

Zum Begleiten beachte bitte die Hinweise im Buch. So können beispielsweise einige Lieder gut mit Terzen begleitet werden.